



HINSDALE
ECONOMIC DEVELOPMENT
CORPORATION

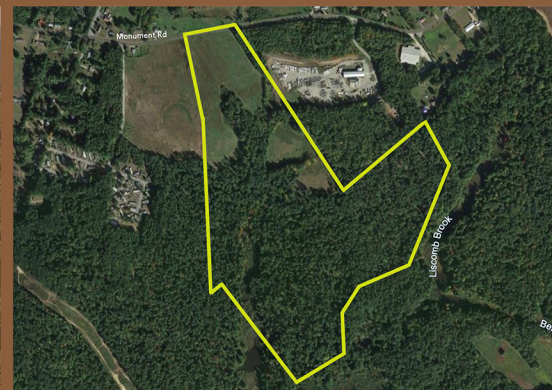
LAND FOR SALE

Monument Road

Property located between 205 and 73
Monument Rd.

BUILD TO SUIT

101.13 ACRES



ABOUT THE PROPERTY

Located on Monument Road, this 100.13-acre parcel is part of Hinsdale's TIF district, allowing infrastructure improvements to be financed through current and future tax revenue. The front portion is flat, cleared, and shovel-ready, ideal for immediate development. Zoned for high-density residential development with recent zoning changes in place. The land is subdividable from 1 to 100 acres, offering flexibility for various project sizes. At just \$7,000 per acre, this is a strong opportunity for residential or mixed-use development in a growth-focused area.

CONTACT INFO

- Monument Road (Parcel 24-101)
Total Acres: 100.13
Zoned: Commercial / Industrial
Owner: H&K Properties LLC
Owner name: Bob Harcke
Phone: (603) 381-4100
Mailing Address:
6 Ferry Road
Westmoreland, NH 03467



CALL NOW

HEDC: 603-499-5726

www.HINSDALEADVANTAGE.com